


**BRIANNA DUSSEAULT**

Harvard Graduate School of Education

Prior Education

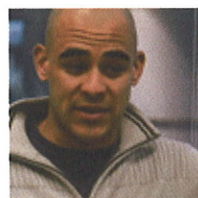
Dartmouth College, AB, 2000

Professional Experience

City on a Hill Public Charter High School (Boston), teacher and math department head; The Monitor Group, consultant

My interactions with Reynolds Fellows studying other disciplines really helped me see that systemic change in education encompasses not just what goes on in the classroom from 8:00 to 3:00, but also issues such as health, wellness, and parental involvement.

Thanks to connections I made during the fellowship, I took a job working as assistant head of the first charter school in New Orleans, and also helping with the launch of a second school. Post-hurricane New Orleans offers once-in-a-lifetime opportunities to think outside the box about education. My work gives me the freedom to experiment with the things I love most: curriculum design, creating professional development systems for teachers, and building partnerships with the community.


**PARIS WALLACE**

John F. Kennedy School of Government

Prior Education

Harvard Business School, MBA candidate; Amherst College, BA, 2004

Professional Experience

The Pre-Business Group (a job-training nonprofit), executive director

The fellowship helped jumpstart an idea I had for a company that would raise money for educational institutions by helping them accept and liquidate real estate transactions. Not only did I learn how to operationalize a social mission during my Reynolds year, but the recognition my business plan received in several competitions gave me the credibility I needed to raise \$100K in first-round funding. That made it possible to attract nonprofit partners and test the plan's concept.


**CATHERINE CASEY**

John F. Kennedy School of Government

Prior Education

Princeton University, AB, 2002

Professional Experience

CAMBA Refugees Services, Refugee Professional Training Program (Brooklyn), founder and director

My long-term goal is to run an organization that operates in post-conflict areas overseas. The Reynolds Foundation Fellowship put me in touch with networks to help me get there, networks I wouldn't have had access to otherwise.

After Harvard, I went to work for the Acumen Fund, where I developed a deeper understanding of the market and operational issues involved in running businesses that provide housing, water and sanitation, and health-care for the poor. I credit the fellowship year with giving me a new sense of what you can accomplish if you have a vision. It gave me the boldness to approach the contacts I made and to engage them in conversations about creating work that I'm passionate about.


**ANNA MILLER**

Harvard School of Public Health

Prior Education

Royal College of Paediatrics and Child Health (UK), Diploma, 1999; Liverpool School of Tropical Medicine, Diploma, 1999; Dundee University, MBChB and BMSc, 1997

Professional Experience

Elizabeth Glaser Pediatric AIDS Foundation (Zimbabwe), technical adviser; Murambinda Mission Hospital (Zimbabwe), government medical officer

The fellowship actively encouraged me to think differently about my commitment to women and children with HIV/AIDS. It enabled me to develop nonmedical skills such as advocacy, team building, communications, and leading through influence. It also showed me how the tools of financial analysis and business modeling could improve my effectiveness as a doctor.

CATHERINE REYNOLDS (right) discussing for-profit philanthropies. A social entrepreneur in her own right, Reynolds helped create the private equity loan market that has enabled millions of people to attend college.

**PROFILES OF ADDITIONAL FELLOWS**

- A Fulbright/Humphrey Scholar whose nonprofit has provided transient housing for more than 80,000 people in the Philippines
- A medical student who created both a nonprofit organization and a for-profit company that help children and their families lead healthier lifestyles
- The director of an international relief agency's recovery efforts following the 2004 tsunami in Indonesia and Hurricane Katrina in 2005
- A former Teach for America program director who started a college prep charter school
- The founder of the largest nonprofit provider of after-school programs in a major East Coast city
- A Fulbright Scholar and Echoing Green Fellow who is pioneering student-centered educational approaches in rural China
- A former U.S. Marine who launched a multiservice NGO based in the slums of Nairobi, Kenya
- A filmmaker and member of the World Economic Forum's Young Global Leaders who is working on a documentary about promoting interreligious harmony



"The power to create sweeping change is often associated with those who serve in high office or possess great wealth. But our history and culture are also shaped by individuals who find and use power that others have failed to recognize or even imagine....Effective social entrepreneurs see what others haven't yet seen and then tell what they've seen and felt. This is what it means to bear witness. This is what it takes to change the world."

— BILLY SHORE, SHARE OUR STRENGTH





THE CATHERINE B. REYNOLDS FOUNDATION

## Fellowships in Social Entrepreneurship

AT HARVARD UNIVERSITY

### THE FACE OF PUBLIC SERVICE IS CHANGING

The emerging field of social enterprise is sparking a fundamental rethinking of the tools and organizational structures for harnessing the power of market forces to solve specific social problems.

A major gift from the Catherine B. Reynolds Foundation has accelerated this trend by making it possible to train a new generation of public leaders who will approach society's most pressing needs with a willingness to compete, an insistence on accountability, and a passion for measuring results.

Candidates for the Catherine B. Reynolds Foundation Fellowships in Social Entrepreneurship are chosen from among the applicants to master's degree programs at Harvard's Graduate School of Education, School of Public Health, and John F. Kennedy School of Government. In addition to applying for admission at one of these schools, candidates must also complete a separate application to the fellowship attesting to their skills and experience in tackling social problems.

Beyond their degree work, fellows participate in a cocurricular program designed by the Kennedy School's Center for Public Leadership. These not-for-credit activities take place several times a month and include leadership skill-building workshops, a field trip, and occasional site visits, as well as discussions with thought leaders and prominent social entrepreneurs. Among the recent speakers:

**Geoffrey Canada**  
President and CEO of Harlem Children's Zone

**Wendy Kopp**  
President and founder of Teach for America

**Billy Shore**  
Founder and executive director of the antihunger program Share Our Strength

**Jim Collins**  
Author of *Built to Last* and *Good to Great*

**Joel Klein**  
Chancellor of the New York City Department of Education

**Pamela Hartigan**  
Managing director of the Schwab Foundation for Social Entrepreneurship

**Nancy Barry**  
Founder of Women's World Banking

**Cory Booker**  
Mayor of Newark, New Jersey

**Jacqueline Novogratz**  
CEO of the Acumen Fund, a nonprofit global venture fund

**Bill Drayton**  
Founder and CEO, Ashoka: Innovators for the Public

### THE AWARD

Up to 25 Reynolds Foundation Fellowships are awarded each year. Fellows receive full tuition for their master's degree program plus health insurance and a stipend of approximately \$21,000.

### ELIGIBILITY REQUIREMENTS

Successful candidates for a Reynolds Foundation Fellowship must have a track record of working for social change, the ability to articulate a social vision, and strong leadership potential. Facility with the business tools used to create scalable, sustainable, and measurable solutions to social problems—for example, strategic planning, business modeling, market segmentation, and financial analysis—is useful but not required.

For more information, or to download an application, go to: [www.reynolds.harvard.edu](http://www.reynolds.harvard.edu)

For questions about the application, guidelines, or eligibility requirements for the Reynolds Foundation Fellowship:

**Committee on General Scholarships**  
617.496.5051  
[RFF@fas.harvard.edu](mailto:RFF@fas.harvard.edu)

For questions about admission to the:

**Harvard Graduate School of Education**  
617.495.3414  
[gseadmissions@harvard.edu](mailto:gseadmissions@harvard.edu)

**Harvard School of Public Health**  
617.432.1031  
[admisofc@hsph.harvard.edu](mailto:admisofc@hsph.harvard.edu)

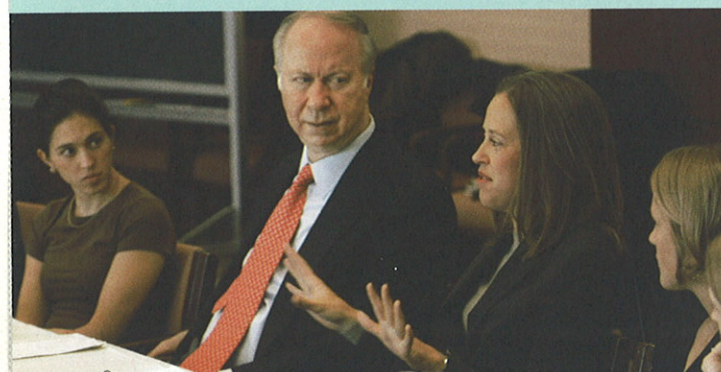
**John F. Kennedy School of Government**  
617.495.1155  
[admissions@ksg.harvard.edu](mailto:admissions@ksg.harvard.edu)

For questions about the cocurricular program for the Reynolds Foundation Fellowship:

**Center for Public Leadership**  
617.496.5238  
[cpl\\_fellowships@ksg.harvard.edu](mailto:cpl_fellowships@ksg.harvard.edu)



COME CHANGE THE WORLD



KSG 07-240 6-07

